

# PDF Writer - PDF Interactive Features

Draft

5/26/2002

Michael Pfeiffer

[michael.pfeiffer@utanet.at](mailto:michael.pfeiffer@utanet.at)

[www.bebits.com/app/2494](http://www.bebits.com/app/2494)

## Abstract

This document describes and illustrates the enhanced capabilities of PDF Writer to detect and add interactive PDF features [[PDF](#)] to a PDF file.

# Table of contents

General .....	<a href="#">3</a>
Bookmarks .....	<a href="#">3</a>
Web Links .....	<a href="#">6</a>
References .....	<a href="#">7</a>

## General

The strategy of PDF Writer to detect any kind of links in a print job, is to take the font information and the text that should be displayed into account. It looks on the text on a line basis. It will cut a link on the end of a line!

## Bookmarks

[what is a bookmark]

### General

PDF Writer identifies bookmarks by font family, style and size. These three attributes are defined in a file located under the home directory in `config/settings/PDF Writer/bookmarks` (the file format is described below). The advanced settings of the page setup dialog allow to select on file in this directory (ie. a file for a different language or a file for different styles) to be used by PDF Writer.

Bookmarks can be nested. In the definition file nesting levels are distinguished by the level number. Level 1 is the top level. Level 2 is below level 1. Up to nine nested levels are allowed (10 is the highest allowed number in the definition file).

A bookmark can be expanded, then its child bookmarks are visible or a bookmark can be collapsed and its child bookmarks are not displayed.

## Configuration

The advanced settings dialog allows to enable the detection and generation of bookmarks and it allows to select a bookmark definition file (see fig. [1](#)).

When the advanced settings window is opened, it adds the filenames of the files it finds in the settings directory to the popup menu. Make sure to open the settings window after you have added a new file into that directory.

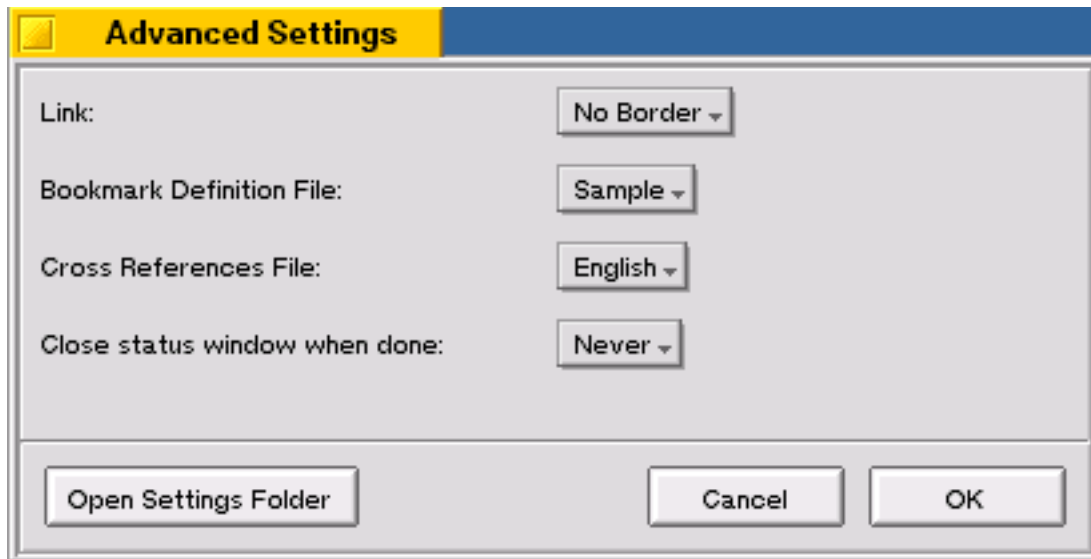


Fig. 1: Advanced Settings.

The file format is shown here in EBNF-like syntax:

File Format: Definition.

Line comment starts with '#'.

```
Definition = Version { Font }.  
Version    = "Bookmarks" "2.0".  
Font       = Level Family Style Size Open.  
Level      = int.  
Family     = String.  
Style      = String.  
Size       = float.  
Open       = "expanded" | "collapsed".  
String     = ''' string '''.  

```

In a version 1.0 bookmark definition file "Open" defaults to expanded.

This document uses a definition file with this contents:

```
# This is the PDF Writer bookmarks definition file!
# The next line is mandatory.
Bookmarks 1.0

# PDF Writer searches for this file in directory:
# /boot/home/config/settings/PDF Writer/bookmarks

# level "font family" "font style" font size
# level has to be between 1 and 10 (both inclusive)
# font family and style and size of the font
1 "Swiss721 BT" "Roman" 27.0
2 "Swiss721 BT" "Roman" 20.0
3 "Swiss721 BT" "Roman" 18.0
```

The top level bookmarks are in font family "Swiss721 BT", font style "Roman" and size 27.0 points. A bookmark below this level has the level number 2. If there are bookmarks on the same level with different font information, these font information have to be entered under the same level number.

# Web Links

## General

[what are links]

## Configuration

The advanced settings dialog allows to enable the detection of web links and it allows to choose the border line width of links. The border line width applies to all kind of links (Web Links and Cross References).

## Samples

<http://open-beos.sourceforge.net>  
<mailto:laplace@users.sourceforge.net>  
[open-beos.sourceforge.net](http://open-beos.sourceforge.net)  
[laplace@users.sourceforge.net](mailto:laplace@users.sourceforge.net)

## Hint

Set the border line width of links to "no border" and highlight links by hand, because Acrobat Reader shows draws a rectangle around links, opposed to the usual underline of HTML browsers.

# References

## General

[what are cross references]

## Configuration

The advanced settings dialog allows to enable the detection and generation of cross references and lets choose the cross references definition file (see Fig. [1](#)).

FileFormat: Definition.

Line comment starts with: '#'

```
Definition = Version {XRefDef}.
Version    = "CrossReferences" "1.0".
XRefDef    = Patterns "-" ">" Patterns ".".
Patterns   = Pattern { "," Pattern }.
Pattern    = ''' string '''.
```

Pattern is a regular expression that must contain a () expression that identifies the link and destination of a cross reference. For example: The link of a *Figure* reference has the pattern "see figure ([0-9]+)", ("see figure" followed by a number), and the destination has the pattern "Figure ([0-9]+)".

Example:

CrossReferences 1.0

```
"see [tT]able ([0-9]+)", "see [tT]bl. ([0-9]+)"
->
```

```
"[tT]able ([0-9]+)".
```

```
"see [fF]igure ([0-9]+)"
```

```
->
```

```
"[fF]igure ([0-9]+)".
```

```
"page ([0-9]+)"          -> "- ([0-9]+) -"
```

## Samples

Are shown above (see Fig. [1](#) and [\[PDF\]](#)).

# Bibliography

[PDF] PDF Reference, Third Edition. Adobe Systems Inc. 2001.